

Windows XP Internet Connection Wizard

Here is a guide to show you how to set your PC up so you can connect to **Montreal-DSL**. You can do this by using the Internet Connection Wizard that comes built in to Windows XP.

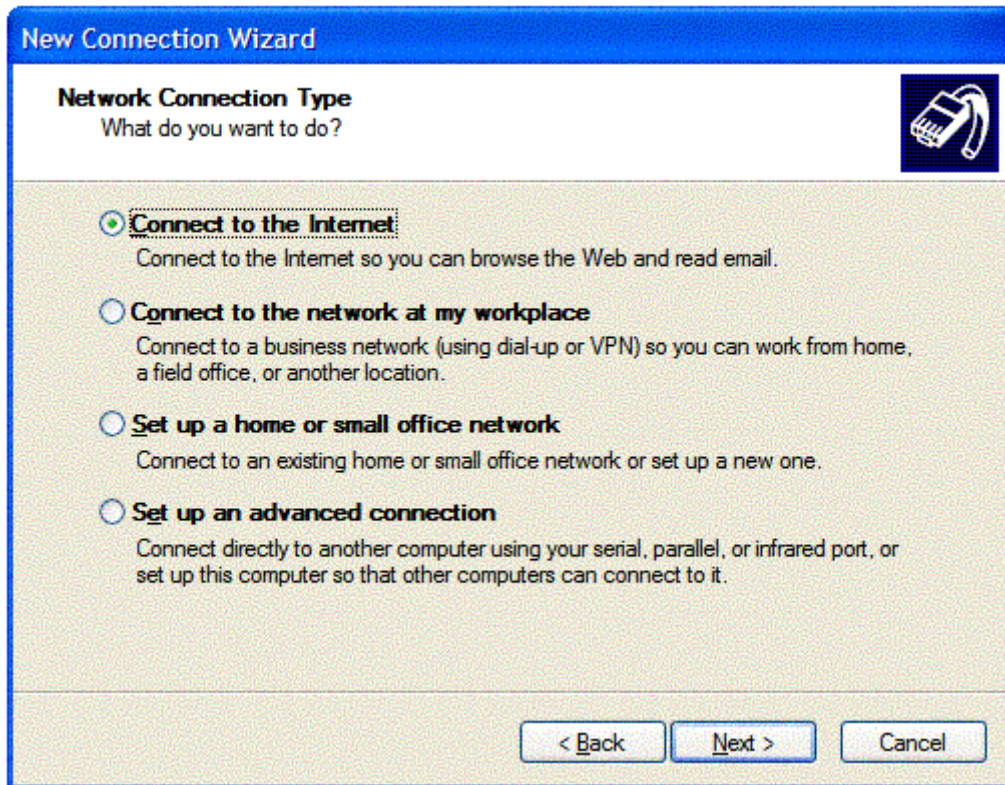
- Open your Start menu and select "Run", and then type in the word "inetwiz" without the quotation marks and click the "OK" button.



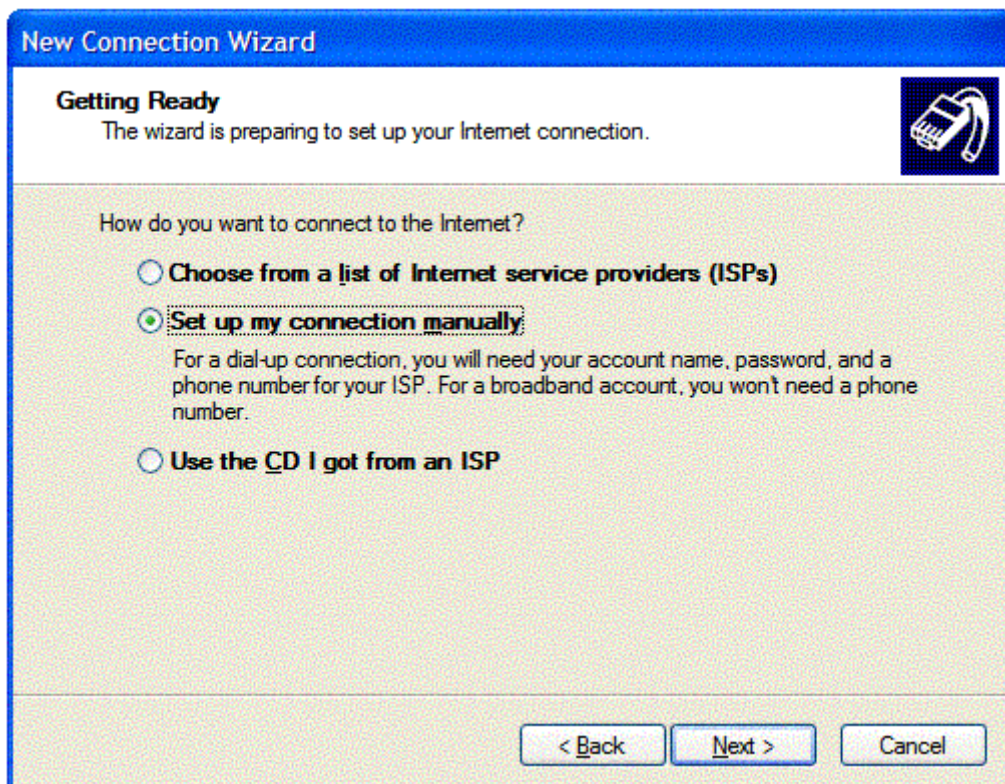
- This opens the "Setup your Internet Connection" page, select the "Connect using my phone line" option and click the "Next" button to continue.



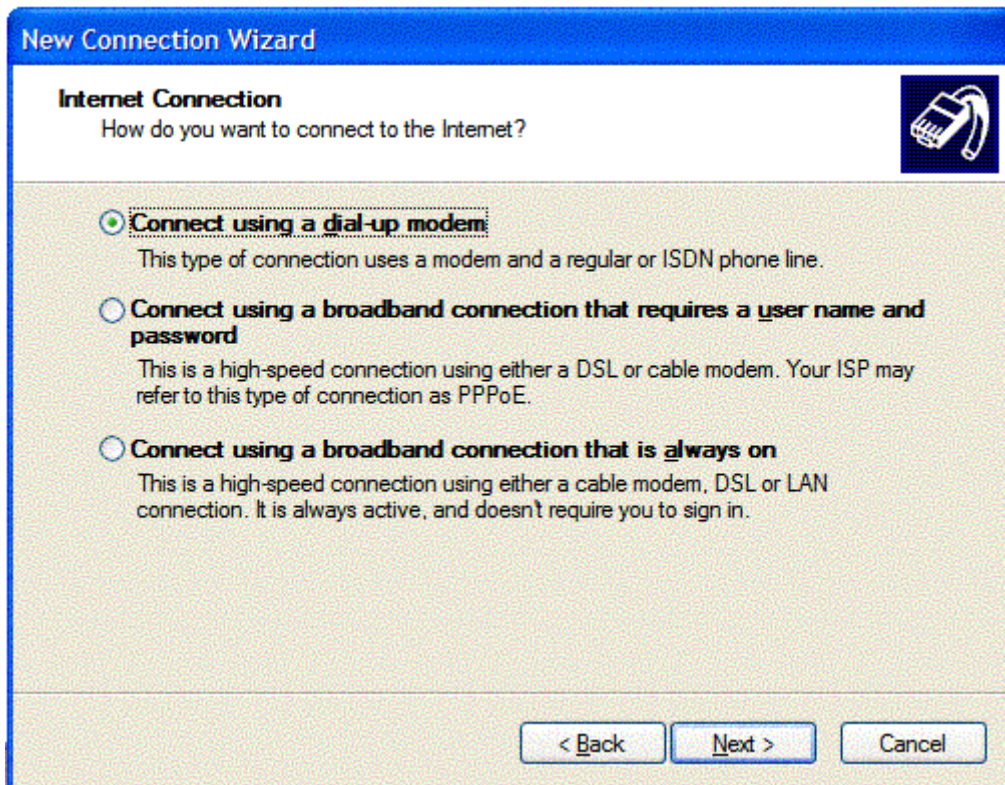
- Select the "Connect to the Internet" option and click the "Next" button to continue.



- Select the "Set up my connection manually" option and click the "Next" button to continue.




- **If you are setting up a dialup connection**, select the "Connect using a dial-up modem" option and click the "Next" button to continue.
- **If you are setting up a DSL connection**, select the "Connect using a broadband connection that requires a user name and password" option and click the "Next" button to continue.



- Type in Montreal-DSL as the "Connection name" and click the "Next" button to continue.

New Connection Wizard

Connection Name
What is the name of the service that provides your Internet connection?



Type the name of your ISP in the following box.

ISP Name


The name you type here will be the name of the connection you are creating.

< Back Next > Cancel

- Type in the local access number that you were given and click the "Next" button to continue.

New Connection Wizard

Phone Number to Dial
What is your ISP's phone number?



Type the phone number below.

Phone number:

You might need to include a "1" or the area code, or both. If you are not sure you need the extra numbers, dial the phone number on your telephone. If you hear a modem sound, the number dialed is correct.

< Back Next > Cancel

- Type in your assigned username and password. For dial-up customers, you need to prefix your username with idm/tsi/ (EX: idm/tsi/doug). For DSL customers, you need to use your complete Montreal-DSL email address (EX: myemail@ppoe.ca). The 3 boxes below the password should all be checked.



The screenshot shows a Windows-style dialog box titled "New Connection Wizard" with a blue header. The main title is "Internet Account Information" in bold. Below it, a subtitle reads: "You will need an account name and password to sign in to your Internet account." To the right of this text is a small icon of a computer mouse. The main area of the dialog is light gray and contains the following text: "Type an ISP account name and password, then write down this information and store it in a safe place. (If you have forgotten an existing account name or password, contact your ISP.)" There are three input fields: "User name:" with the text "idm/tsi/doug", "Password:" with ten black dots, and "Confirm password:" with ten black dots. Below these fields are three checked checkboxes: "Use this account name and password when anyone connects to the Internet from this computer", "Make this the default Internet connection", and "Turn on Internet Connection Firewall for this connection". At the bottom right, there are three buttons: "< Back", "Next >", and "Cancel".

- All done! Click the "Finish" button.



Your PC should now be all ready to connect to the Internet.

To get online just double click onto the Internet Explorer icon on your Desktop to surf the Web.



[Click here](#) to check your Internet Explorer Settings.

To check your email just double click onto the Outlook Express icon on the desktop.



[Click here](#) to check your Email settings.