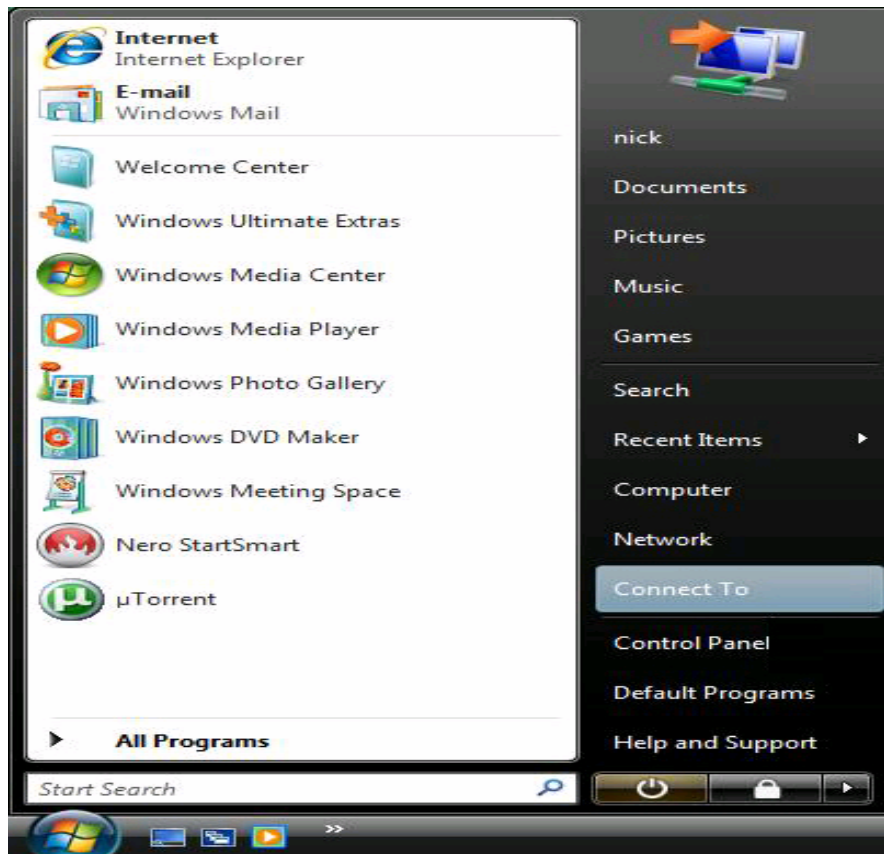
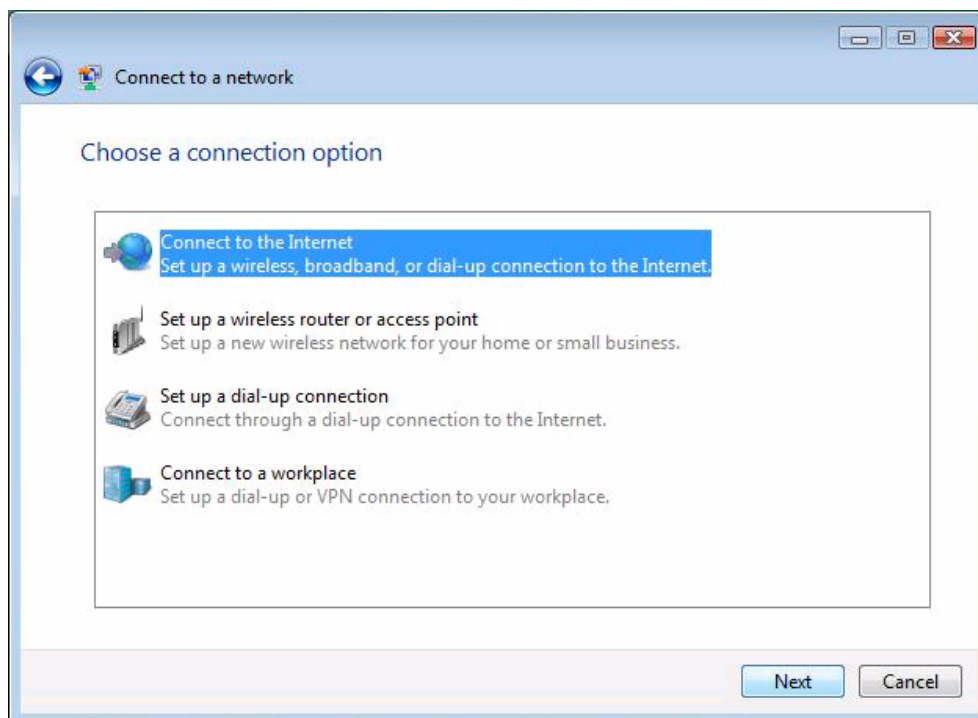


Windows Vista Broadband Connection for Montreal-DSL

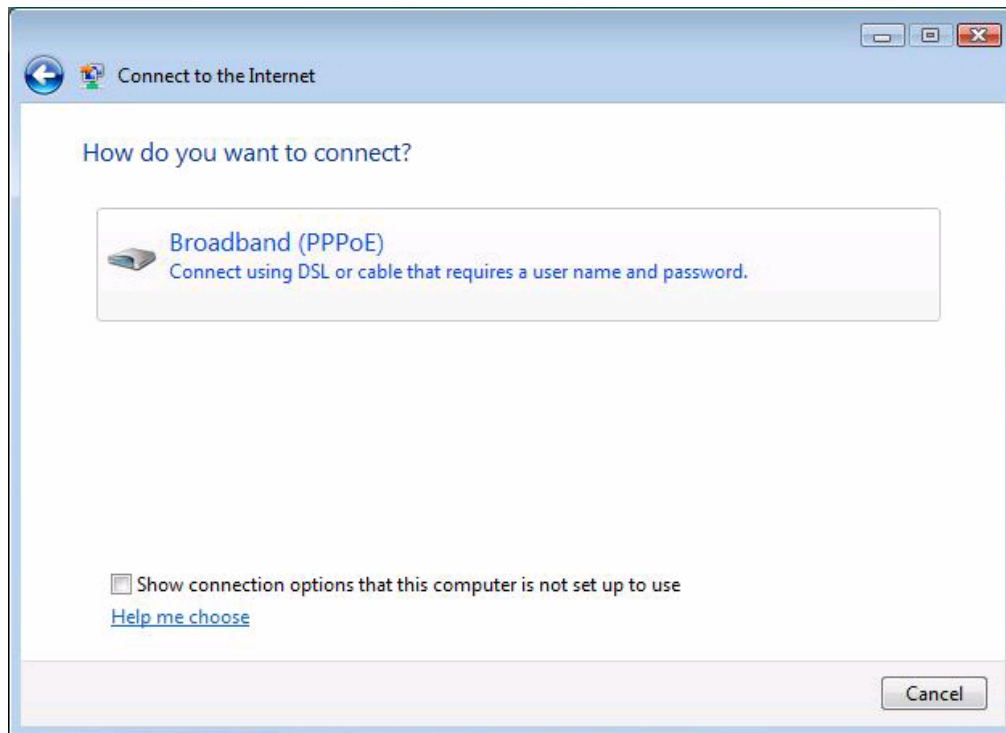
1. Click on **Start** then click on **Connect To**



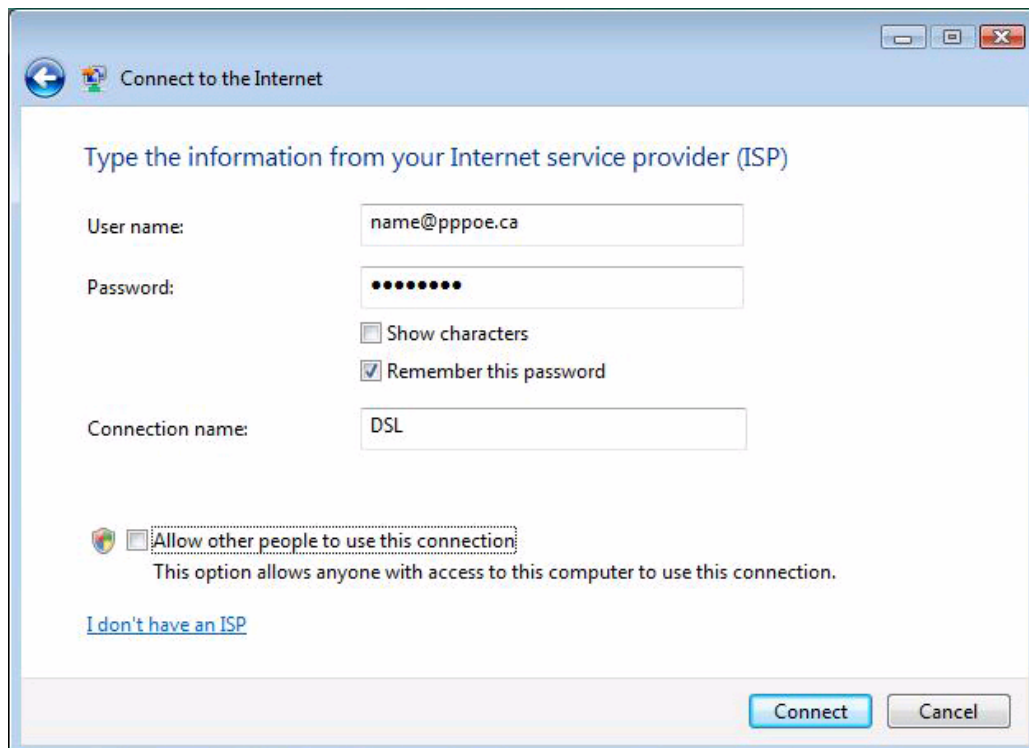
2. Make sure **Connect to the Internet** is selected and click **Next**



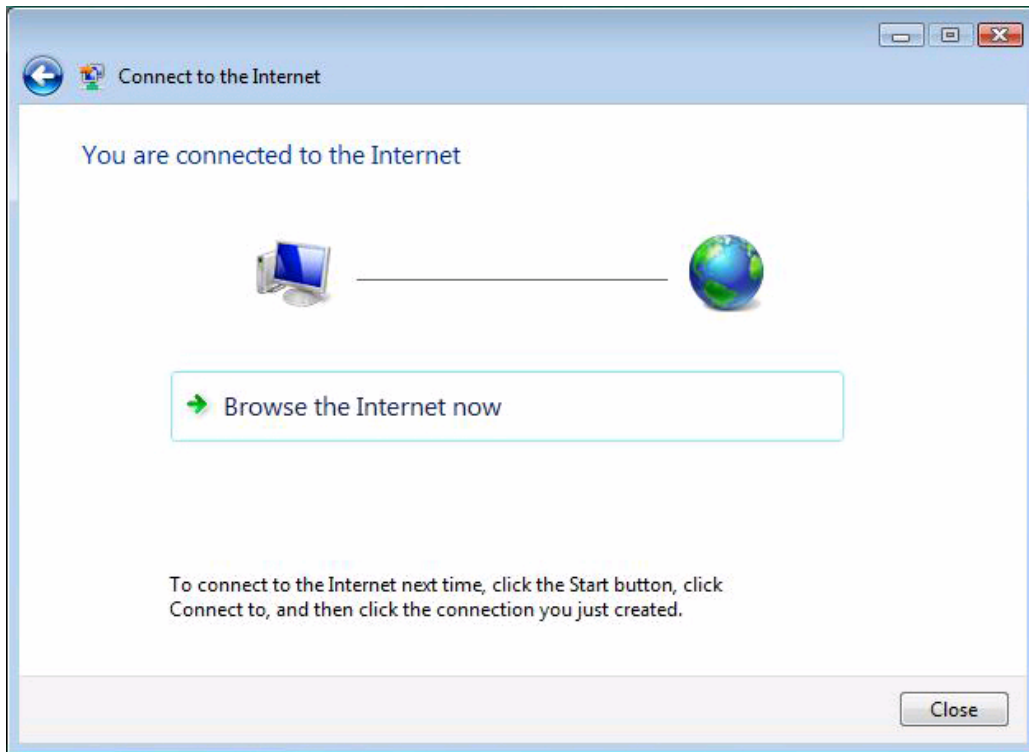
3. Click on **Broadband (PPPoE)**



4. Enter in your **User Name**, **Password** and type in a **Connection Name**, once these are filled in click on **Connect**.



5. Now you are done. Click on **Browse the Internet now**



If you have any issues, please call tech support at 1-866-270-9543