

Windows NT 4 Internet Connection Wizard (Setting up Dial-Up Networking) – Montreal-DSL

Double click on the **My Computer** icon.

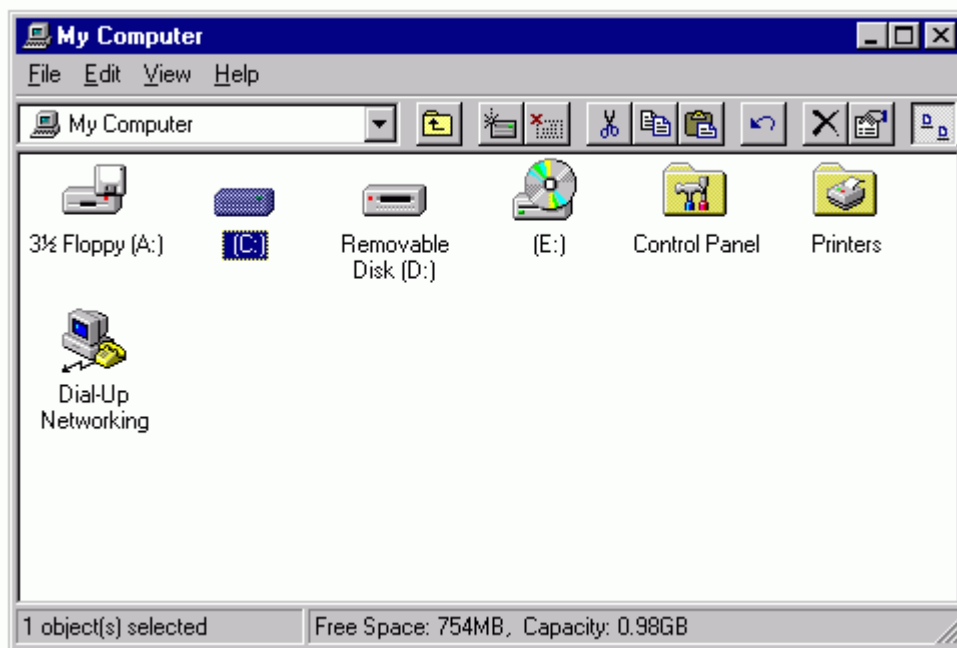


Within that window is an icon for **Dial-Up Networking**.

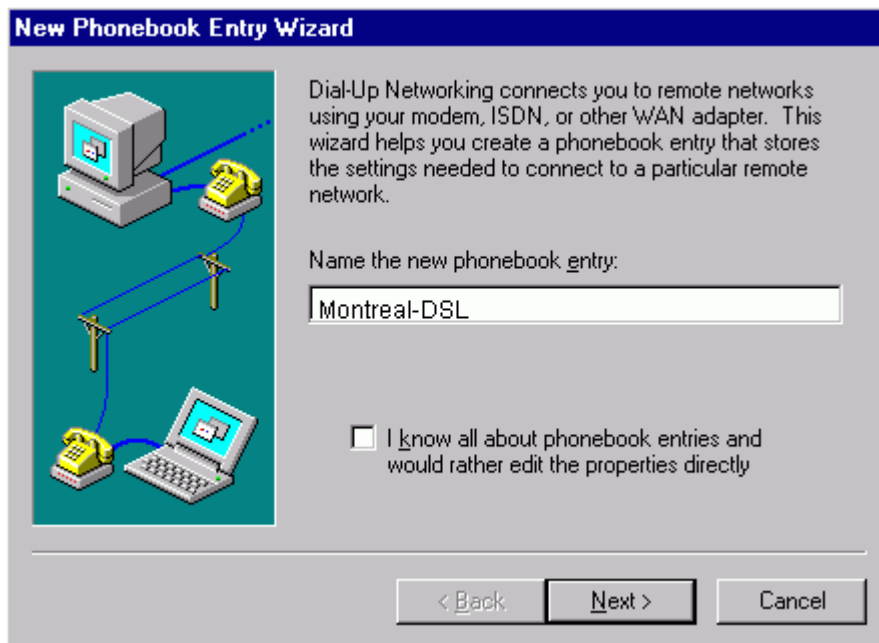
Double click on the icon for **Dial-Up Networking**.

If **Dial Up Networking** has not been installed,

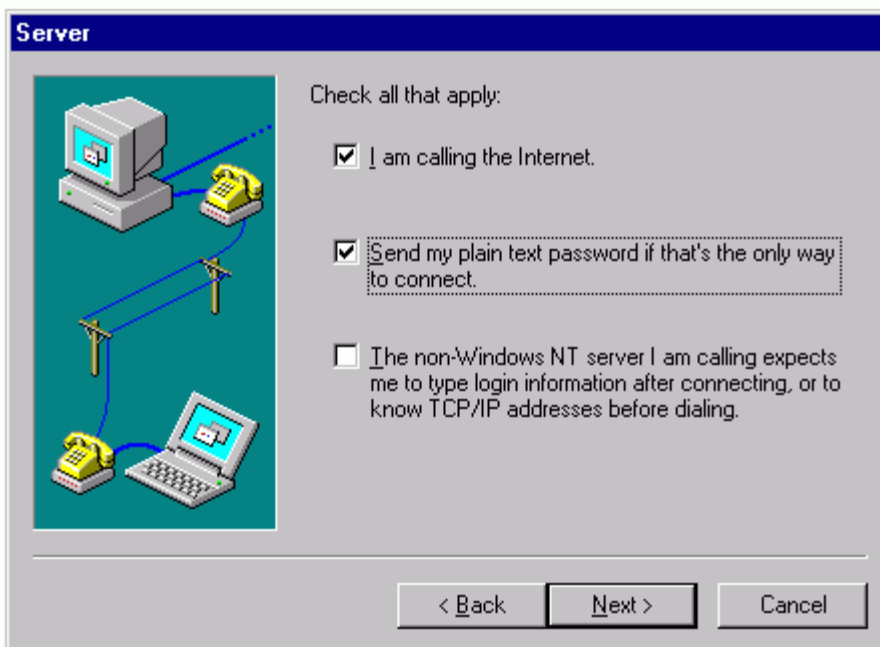
Windows NT will prompt you to install it.



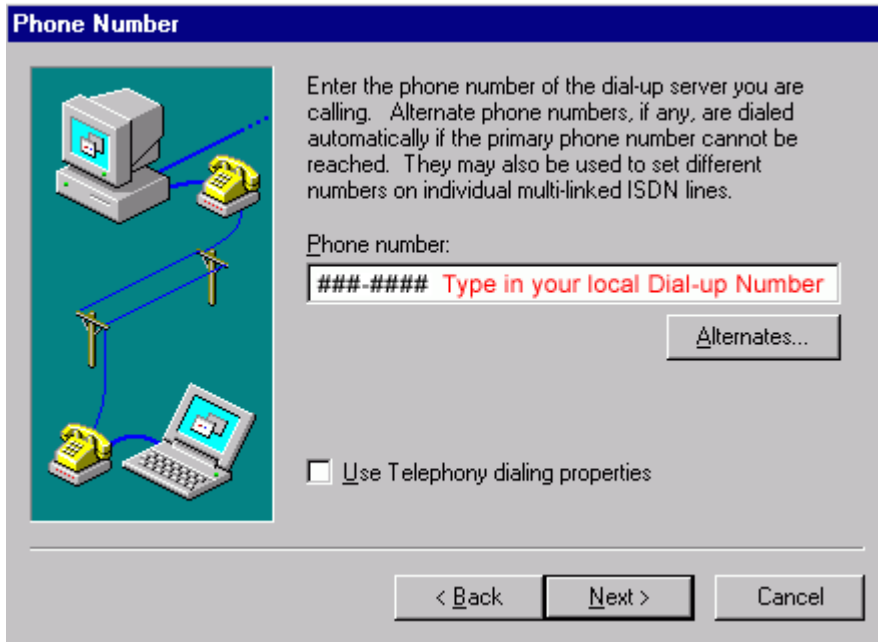
If **Dial Up Networking** is already installed but there are no phonebook entries, you will be prompted to add one. Enter a name for the session. In this case, **Montreal-DSL**.



Check the boxes for "I am calling the Internet" and "Send my plain text password..."



Enter the Montreal-DSL Access Number to be dialed by the computer.

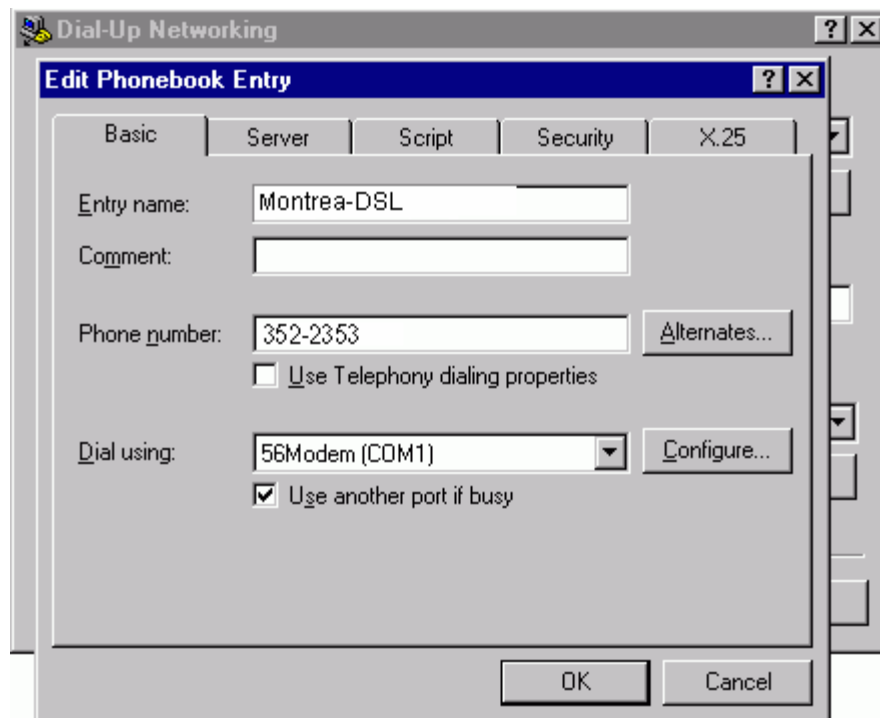


Click on the finish button to complete this entry.

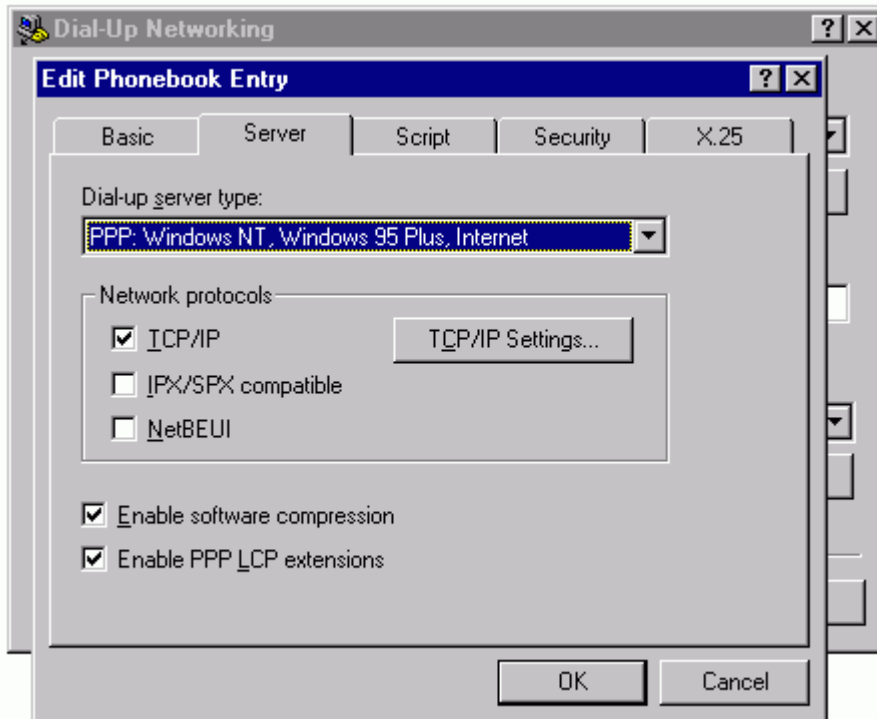


You may choose to create a shortcut on the desktop from the **"More"** menu.

From the **MORE** pull down menu, select **Edit Entry and Modem Properties**.



Click on the **Server** tab. Click on **TCP/IP Settings**.



Server Assigned IP Address should be selected.

Specify Name Server Addresses should be selected.

Enter the following values:

Primary DNS: 65.39.192.130

Secondary DNS: 65.39.196.215

Click on **OK** to close the **TCP/IP Settings** window.

TCP/IP Settings [?] [X]

Server assigned IP address
 Specify an IP address

IP address: 0 . 0 . 0 . 0

Server assigned name server addresses
 Specify name server addresses

Primary DNS: 65 . 39 . 192 . 130
Secondary DNS: 65 . 39 . 196 . 213
Primary WINS: 0 . 0 . 0 . 0
Secondary WINS: 0 . 0 . 0 . 0

Use IP header compression
 Use default gateway on remote network

OK Cancel

Username begins with *idm/tsi/username*

Connect to Gemair [?] [X]

Enter a user name and password with access to the remote network domain.

User name: idm/tsi/usemame
Password: xxxxxx
Domain:

Save password

OK Cancel