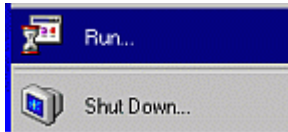


Windows 2000 Internet Connection Wizard

Here is a guide to show you how to set your PC up so you can connect to **Montreal-DSL**. You can do this by using the Internet Connection Wizard that comes built in to Windows 2000.

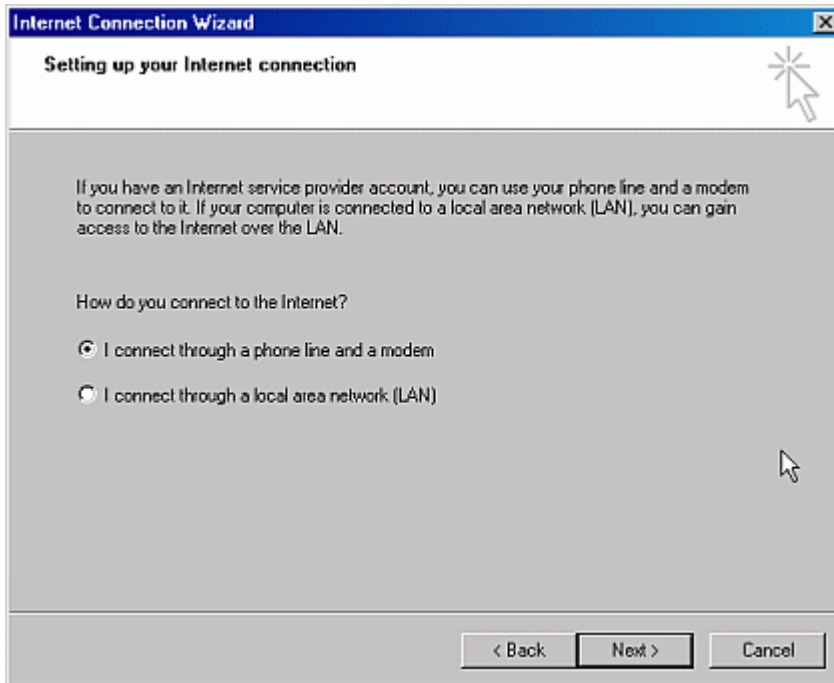
- Open your Start menu and select "Run", and then type in the word "inetwiz" without the speech marks and click the "OK" button.



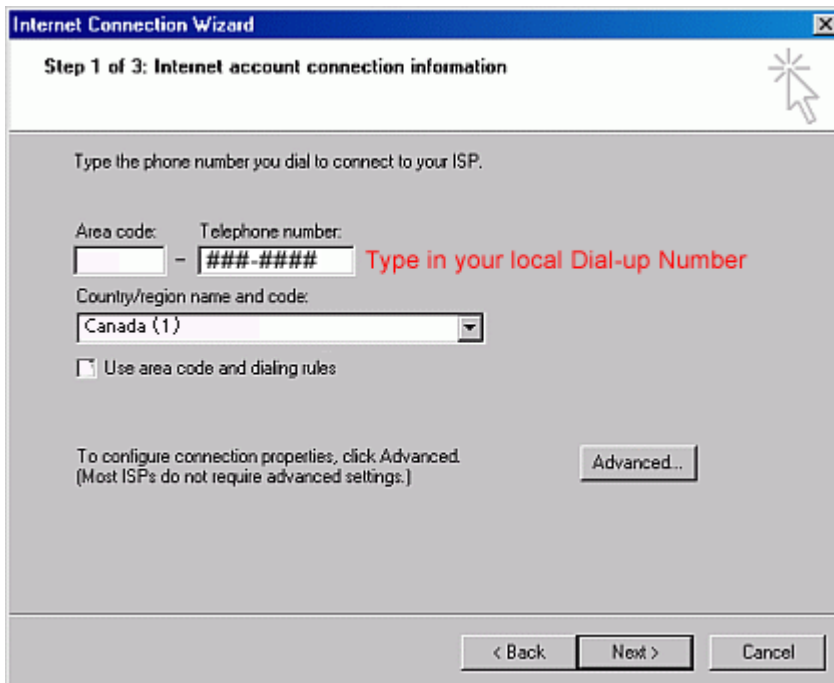
- This opens the "Welcome to the Network Connection Wizard" page, select the "I want to set up my Internet Connection manually, or I want to connect through a local area Network (LAN)" option and click the "Next" button to continue.



- Select the "I connect through a phone line and a modem" option and click the "Next" button to continue.



- Type in your area code in the Area code field and the local access number that you were given in the phone number field. Select "Canada (1)" for the "Country/region name and code". Check that the "Use area code and dialing rules" box is not ticked and click the "Next" button to continue.



- Type in your Montreal-DSL username in the Username box. Type in your Montreal-DSL password in the Password box and click the "Next" button to continue.

Internet Connection Wizard

Step 2 of 3: Internet account logon information

Type the user name and password you use to log on to your ISP. Your user name may also be referred to as your Member ID or User ID. If you do not know this information, contact your ISP.

User name:

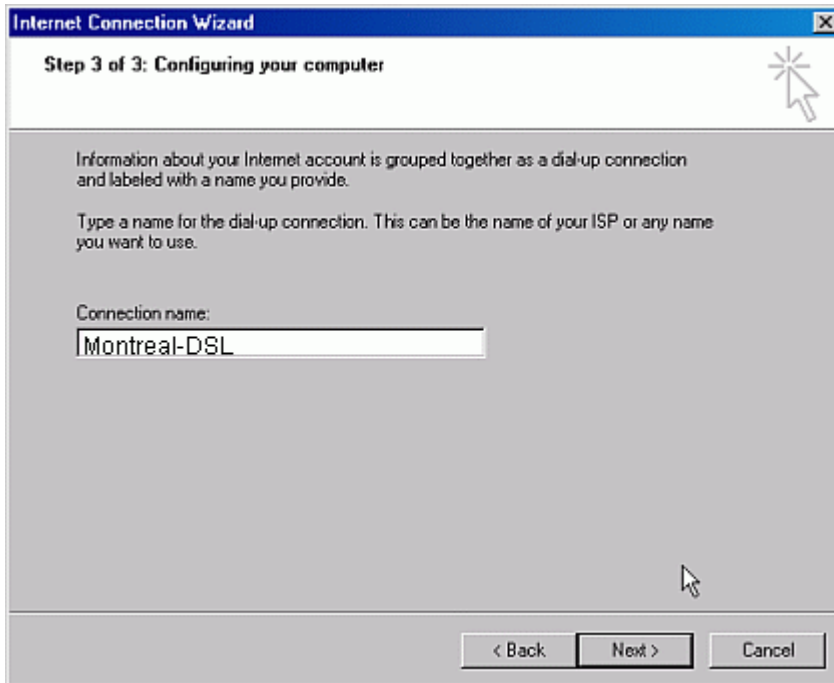
Password:

< Back Next > Cancel

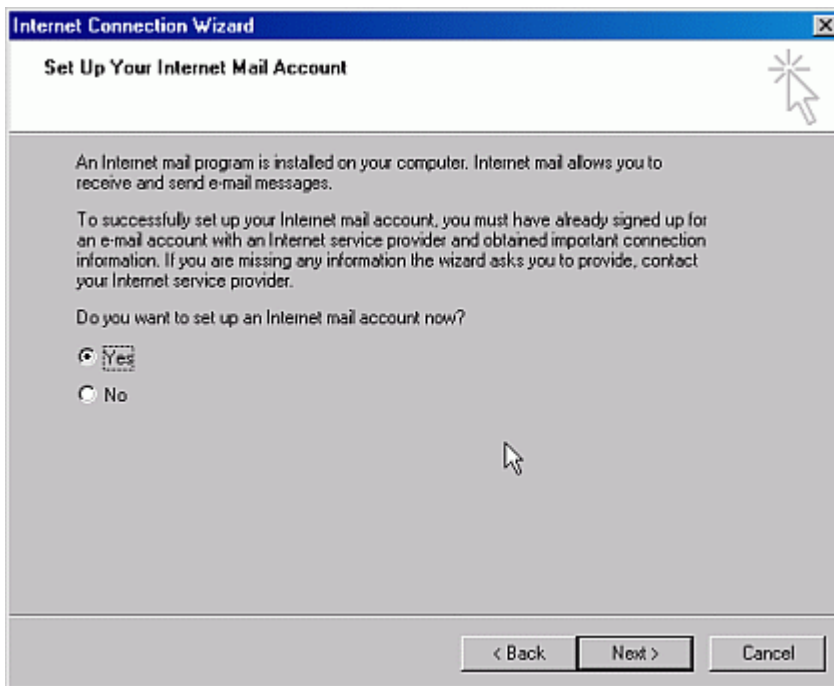
Please be careful when you type in your Username and Password because they are case sensitive.

In other words if you type in USERNAME (uppercase) instead of username (lowercase) Montreal-DSL will not recognize you. The same thing goes for the password. Type in your Username and Password that were assigned to you by our representative. The password you type in shows up as a bunch of stars to keep it private.

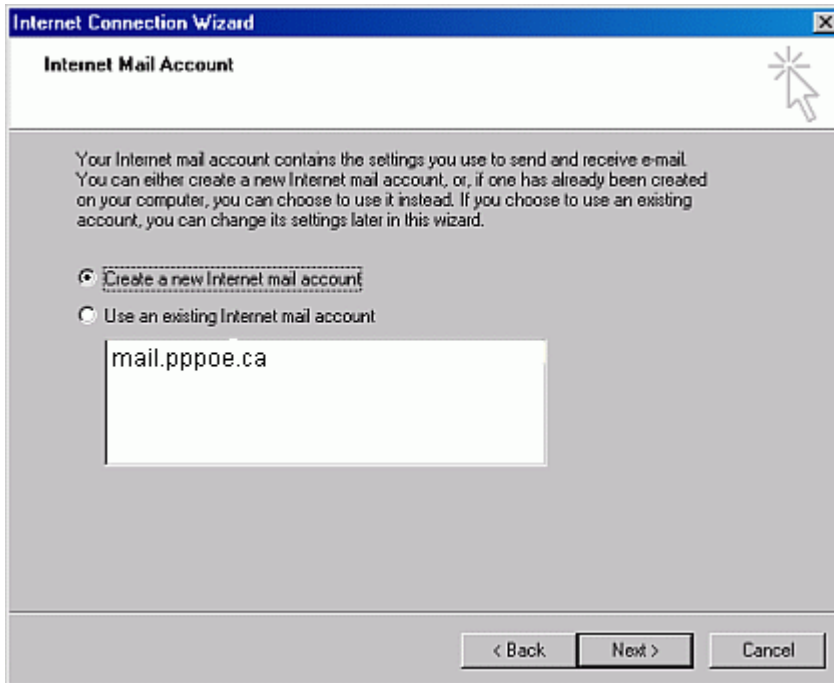
- Type in Montreal-DSL as the "Connection name" and click the "Next" button to continue.



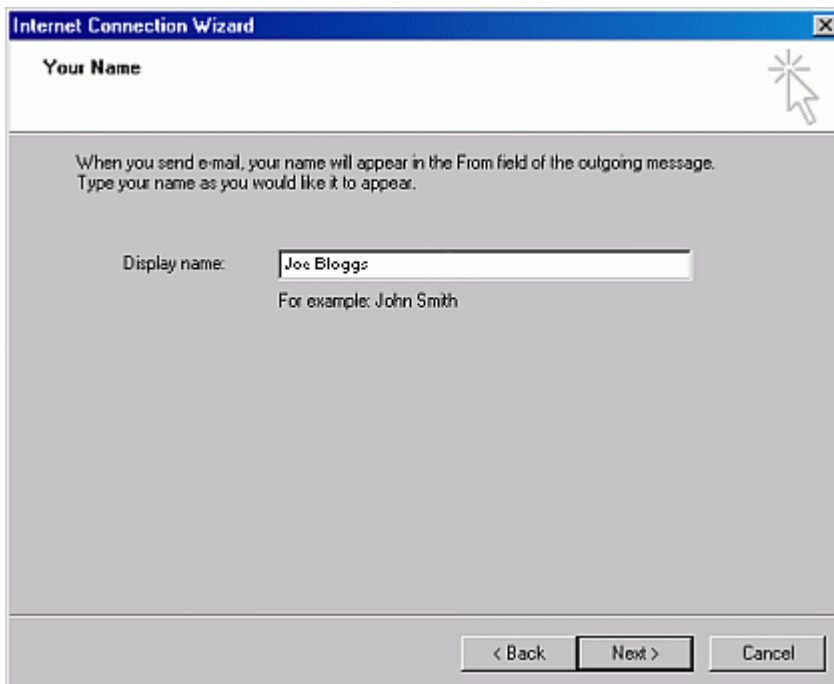
- Select the "Yes" option to setup your internet mail account and click the "Next" button to continue.



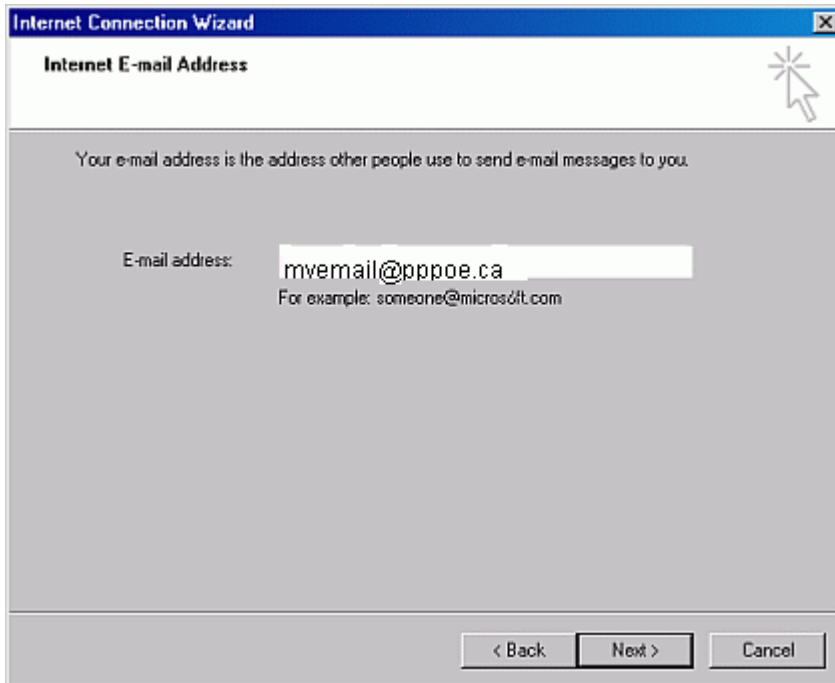
- Select the "Create a new Internet mail account" options and and click the "Next" button to continue.



- Type in the name that you want others to see when you send them email in the "Display Name" field and click the "Next" button to continue.



- On the "Internet E-mail Address" page type in your Xtra email address and click the "Next" button to continue.



If you are unsure about your email address you can type in your username with @pppoe.ca after it. In this example that's myemail@pppoe.ca

Please note that email addresses aren't case sensitive. So that MYEMAIL@PPPOE.CA and myemail@pppoe.ca are the same email address. This is not true for Montreal-DSL Usernames and Passwords.

- On the "E-Mail Server Names" page check that the first line "My incoming mail server is a" reads "POP3".
- Type in **mail.pppoe.ca** for the Incoming mail server. Type in **mail.pppoe.ca** for the Outgoing mail server and click the "Next" button to continue.

The screenshot shows a window titled "Internet Connection Wizard" with a sub-header "E-mail Server Names". The window contains the following elements:

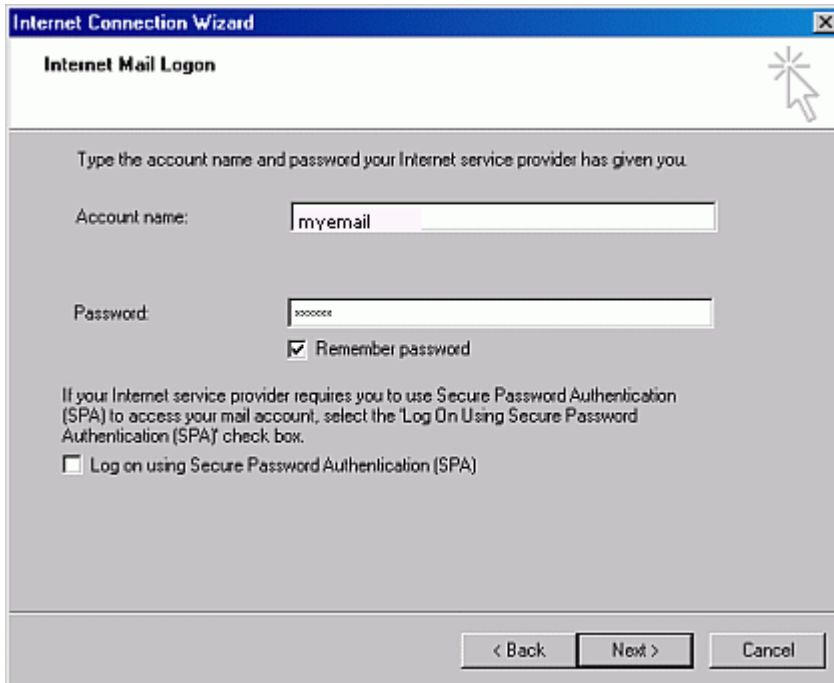
- A dropdown menu for "My incoming mail server is a" set to "POP3", followed by the text "server."
- A label "Incoming mail (POP3, IMAP or HTTP) server:" above a text input field containing "mail.bbpo.e.ca".
- A label "An SMTP server is the server that is used for your outgoing e-mail." above the text "Outgoing mail (SMTP) server:".
- A text input field for the outgoing mail server, also containing "mail.bbpo.e.ca".
- At the bottom, three buttons: "< Back", "Next >", and "Cancel".

- On the "Internet Mail Logon" page type in your Montreal-DSL username in the "Account Name" field. Type in your Montreal-DSL password in the "Password" field. If the password box is grayed out then put a tick in the Remember Password box.

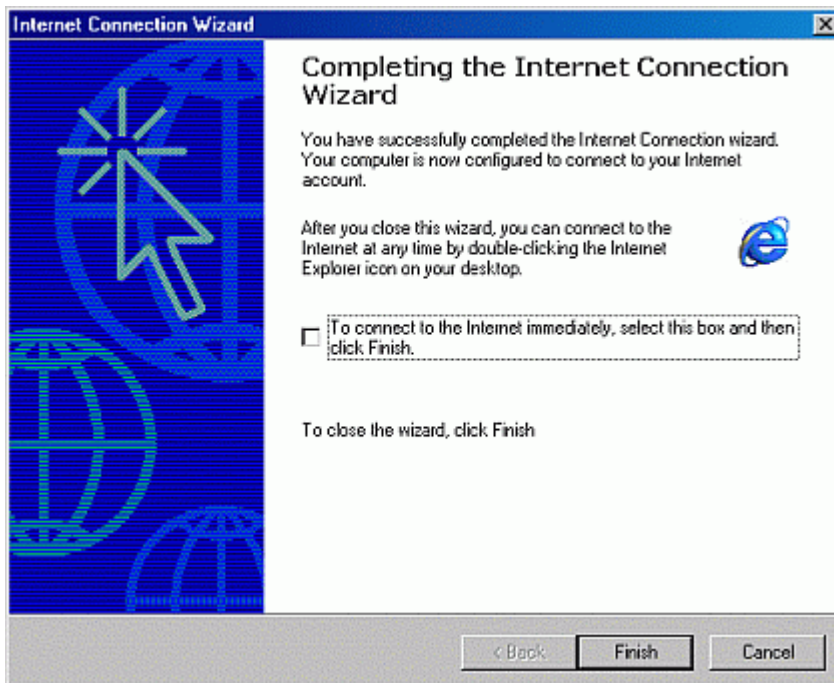
Please check that the username you type in is not in the wrong capitalization because usernames and passwords are case sensitive.

The password you type in shows up as a bunch of stars to keep it private. If you want to type in a password every time you check your email then leave the Remember Password box unticked.

- Click the "Next" button to continue.



- All done! Put a tick in the box next to "To connect to the Internet immediately, select this box and then click Finish" and click the "Finish" button.
- If you don't want to connect to the Internet immediately then leave the box unticked and click the "Finish" button.



Your PC should now be all ready to connect to the Internet.

To get online just double click onto the Internet Explorer icon on your Desktop to surf the Web.



[Click here](#) to check your Internet Explorer Settings.

To check your email just double click onto the Outlook Express icon on the desktop.



[Click here](#) to check your Email settings.