

Mac Internet Setup Assistant

You can use the Internet Setup Assistant to setup your Mac to connect to **Montreal-DSL**. Here is a guide to show you how. Although these instructions are for Mac OS version 9.1 you can follow them if you have Mac OS 8.1 or above.

[Click here](#) for Mac OS 7 Free PPP.

[Click here](#) for Mac OS X setup instructions.

[Click here](#) for iMac setup instructions.

- You can find the Internet Setup Assistant in the Mac Hard Drive icon on your Desktop, in a folder called "Internet".
- Double click on the Internet Setup Assistant icon.

Alternatively, hold down the Apple key and the "F" button at the same time. This opens the "Find Files" window.

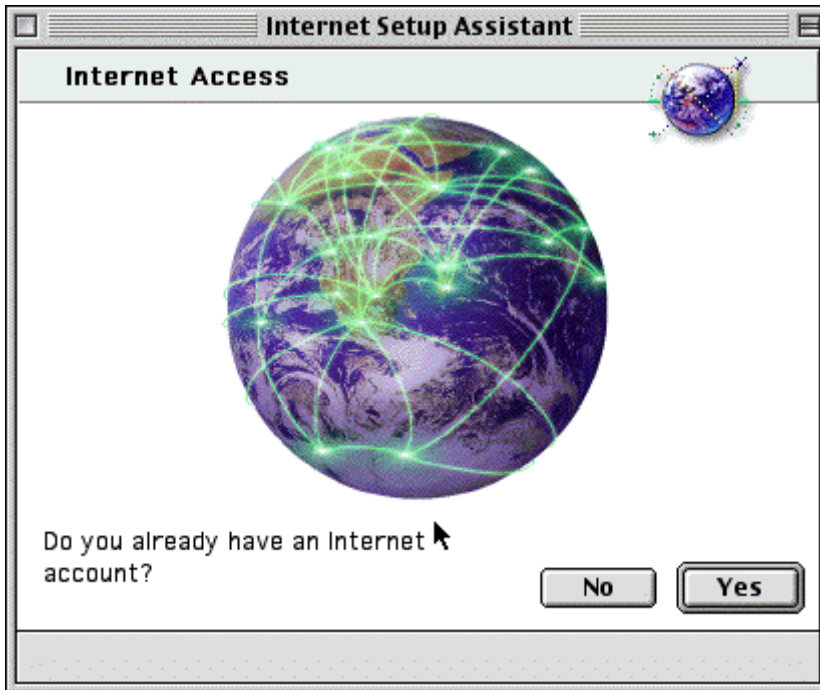
- Type in the word "assistant" and click on the "Find" button.
- You'll see a list of matching file types. From the list double click onto "Internet Setup Assistant".

Either way will start the Internet Setup Assistant.

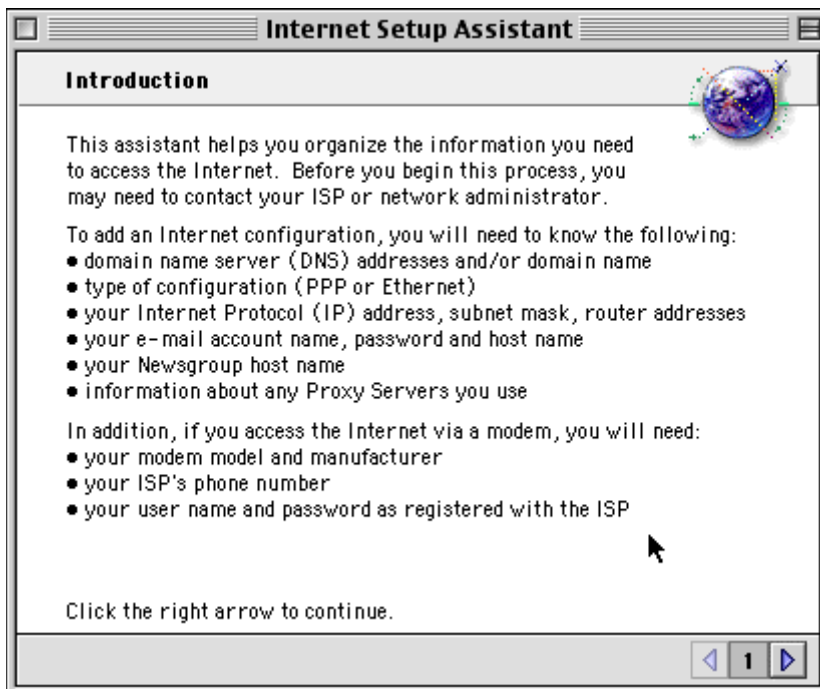
- On the first page select "Yes" to setup your Mac.



- Select "Yes" to the question - "Do you already have an Internet Account?"

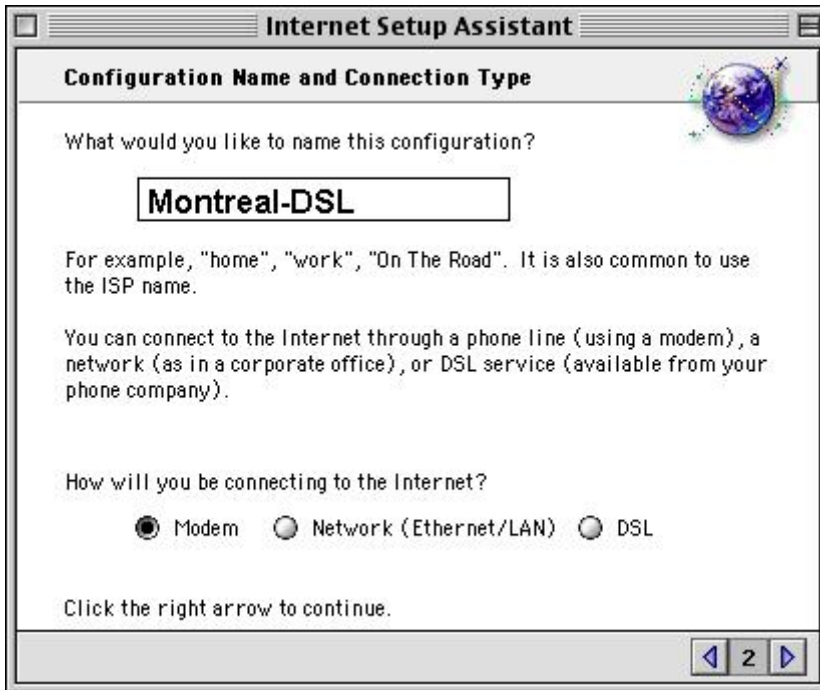


- Click the right arrow button on the "Introduction" page to continue.

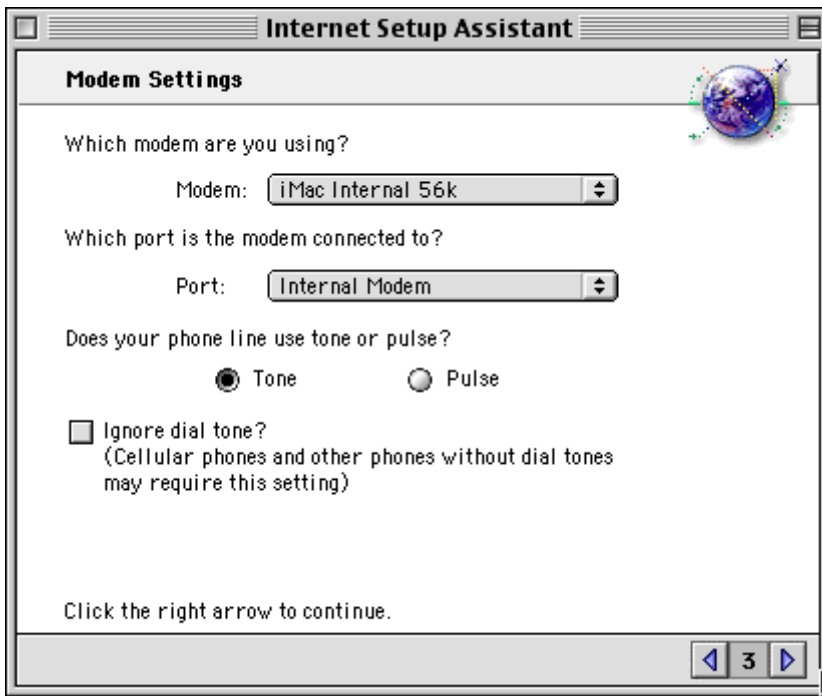


- Type in "Montreal-DSL" as the name the configuration.
- If you will connect to Montreal-DSL through a Modem then check the "Modem" option.

- Click the right arrow button to continue.



- Where you see the question, "Which modem are you using?", check that the modem listed matches your actual modem. If you don't know the name of your modem then you'll need to check your modem manual or talk to your Apple vendor and ask them.
- For "Port" select your modem port. If your modem is built in then this will be the "Internal Modem" port.
- Your phone line should be set to use "Tone".
- Check to make sure that you don't have "Ignore Dial Tone?" selected.
- Click the right arrow button to continue.

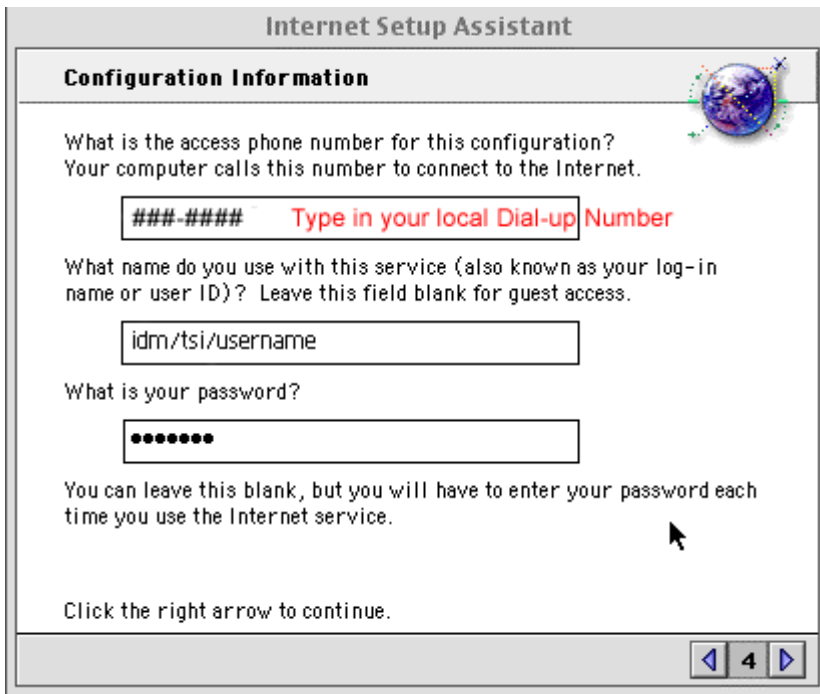


- Type in the local access number that you were given.
- Type in your Montreal-DSL Username and Password on the same page.

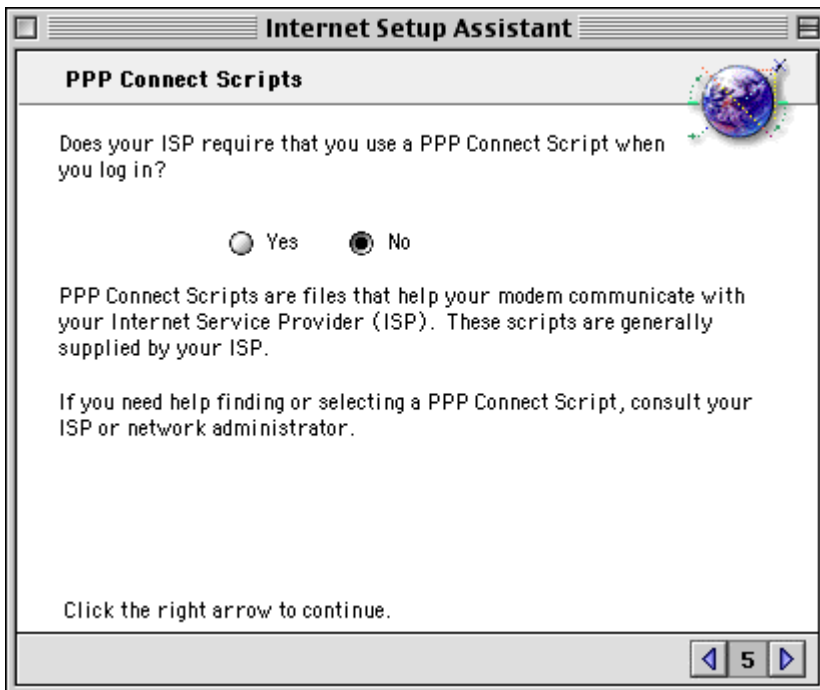
Please be careful when you type in your Username and Password because they are case sensitive.

In other words if you type in USERNAME (uppercase) instead of username (lowercase) Montreal-DSL will not recognize you. The same thing goes for the password. Type in your Username and Password exactly as you chose them when you signed up with us. The password you type in shows up as a bunch of dots to keep it private.

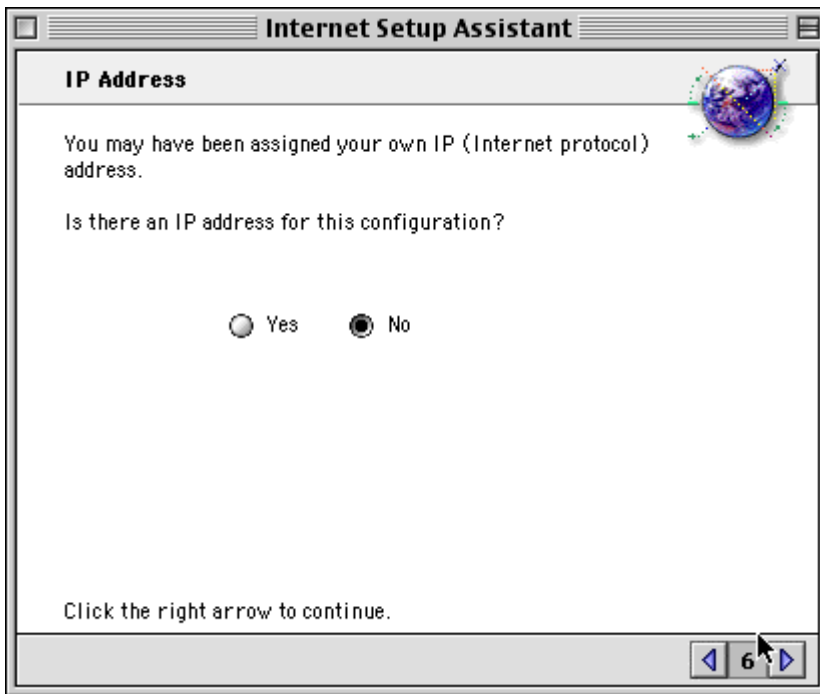
- Click the right arrow button to continue.



- Select "No" on the "PPP Connect Scripts" page.
- Click the right arrow button to continue.

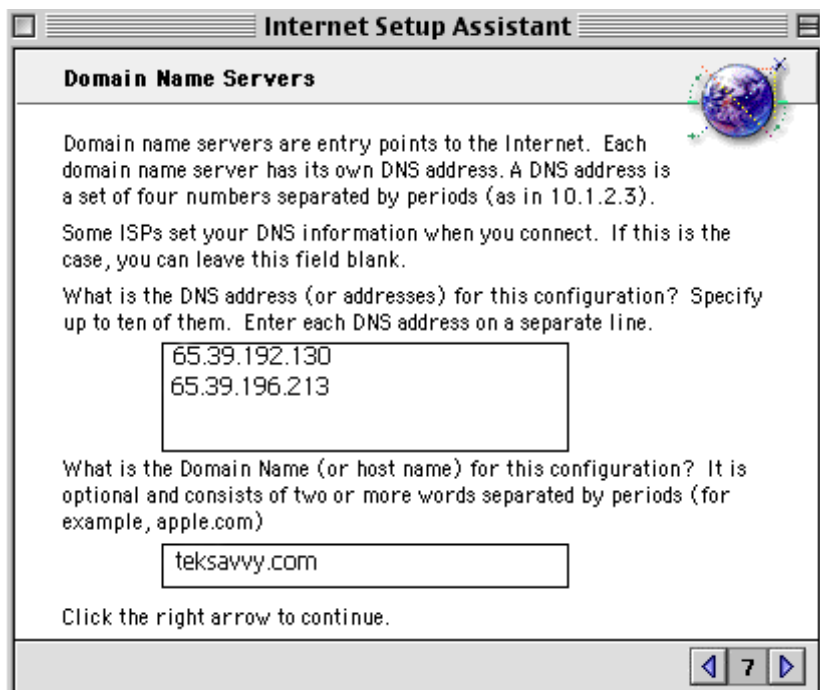


- Select "No" on the "IP Address" page.
- Click the right arrow button to continue.



You'll need to fill in some details on the in the "Domain Name Servers" page.

- Click into the "DNS Address" box and type in the number 65.39.192.130 and press the Return button on your keyboard. Then type in 65.39.196.215 and press Return again. In other words each DNS entry should be on a separate line.
- Click into the "Domain Name" box and type in Montreal-DSL.com
- Click the right arrow button to continue.



- On the "E-mail Address and Password" page type in your Montreal-DSL email address.

If you are unsure about your email address you can type in your username (without the idm/tsi/) with @pppoe.ca after it.

Please note that email addresses aren't case sensitive. So that USERNAME@pppoe.ca and username@pppoe.ca are the same email address. This is not true for Montreal-DSL Usernames and Passwords.

- Then further down the same page, type in your password.

Please check that the password that you type in is not in the wrong capitalization because passwords are case sensitive. The password you type in shows up as a bunch of dots to keep it private.

- Click the right arrow button to continue.

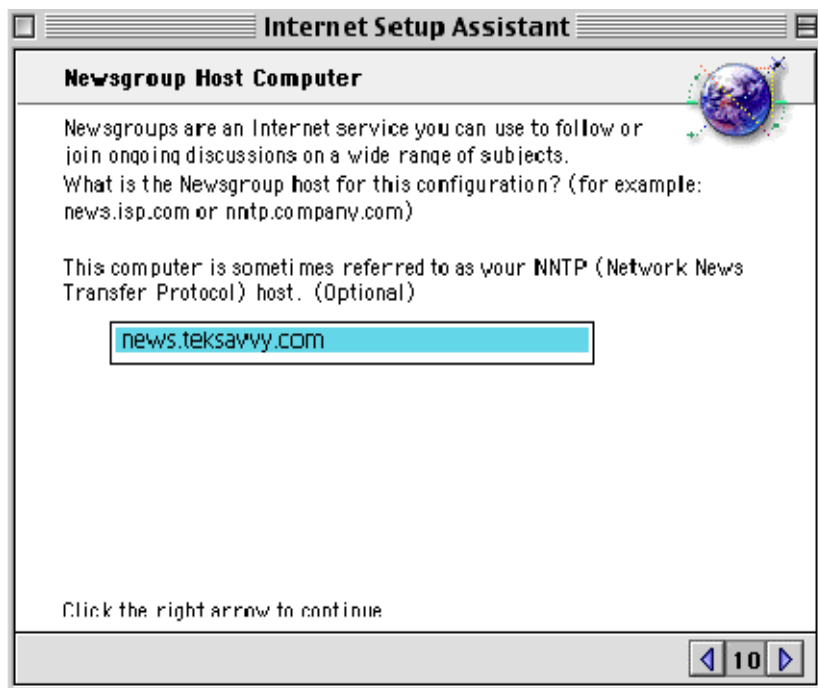


The screenshot shows a window titled "Internet Setup Assistant" with a sub-header "E-mail Address and Password". The main text asks for the email address and provides examples. A text box contains "username@pppoe.ca". Below, it asks for the password, with a text box filled with dots. At the bottom, it says "Click the right arrow to continue." and has navigation buttons with a page number "8".

- On the "E-mail Account and Host Computer" page fill in your username@pppoe.ca for your e-mail account. So, for example, if your username is my email, then you'd type in myemail@mail.pppoe.ca
- Further down the same page type in mail.pppoe.ca for the e-mail host.
- Click the right arrow button to continue.



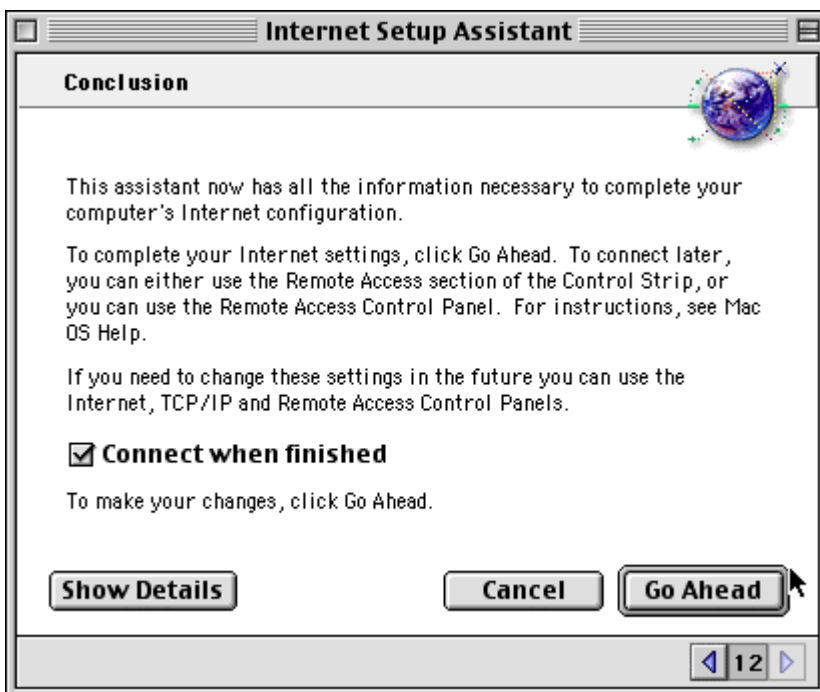
- Type in news.teksavvy.com on the "Newsgroup Host Computer" page if you are using a dial-up account with us. We are currently working on Usenet service for DSL customers.
- Click the right arrow button to continue.



- Select "No" on the "Proxies" page.
- Click the right arrow button to continue.



- All done! If you want to connect to the Internet then tick the box "Connect When Finished" and select "Go Ahead".



Your Mac should then dial up automatically. After that Internet Explorer should load up showing you your homepage.

