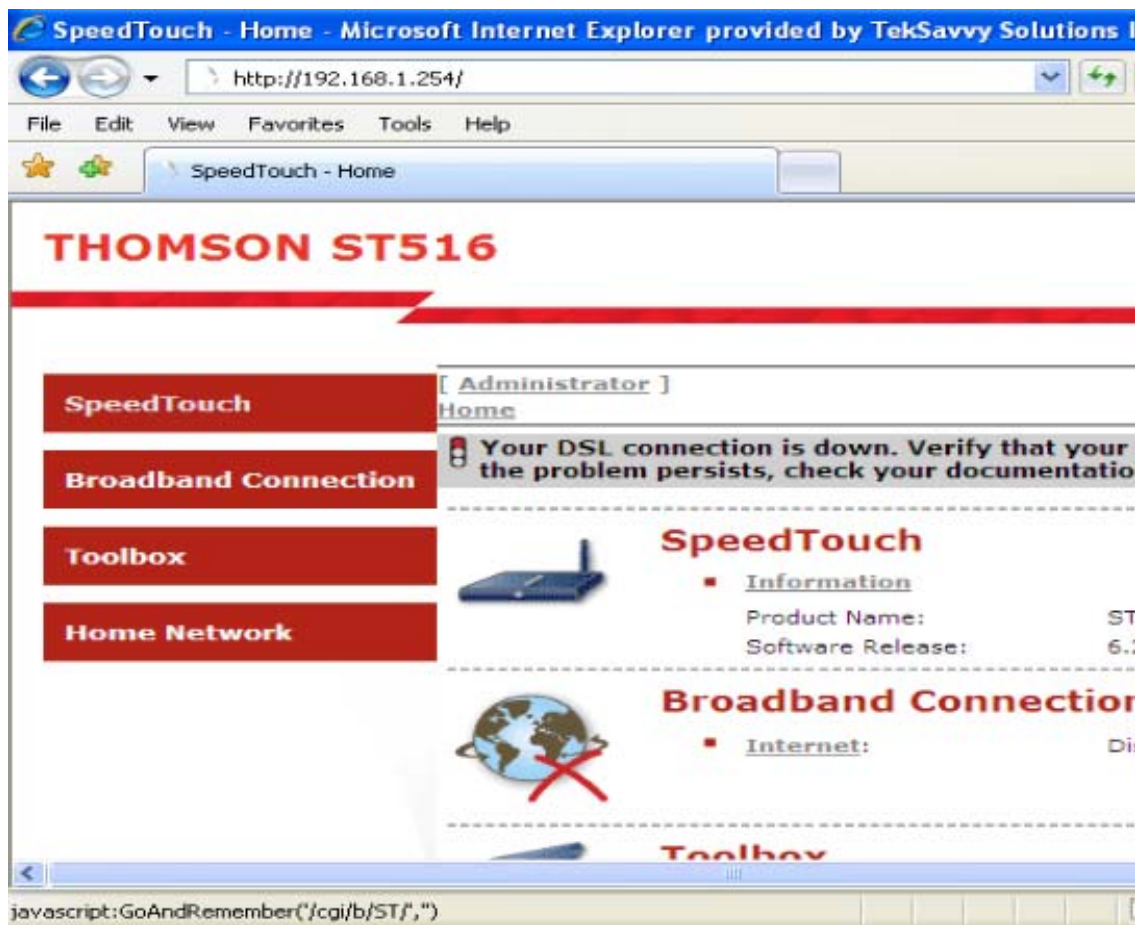
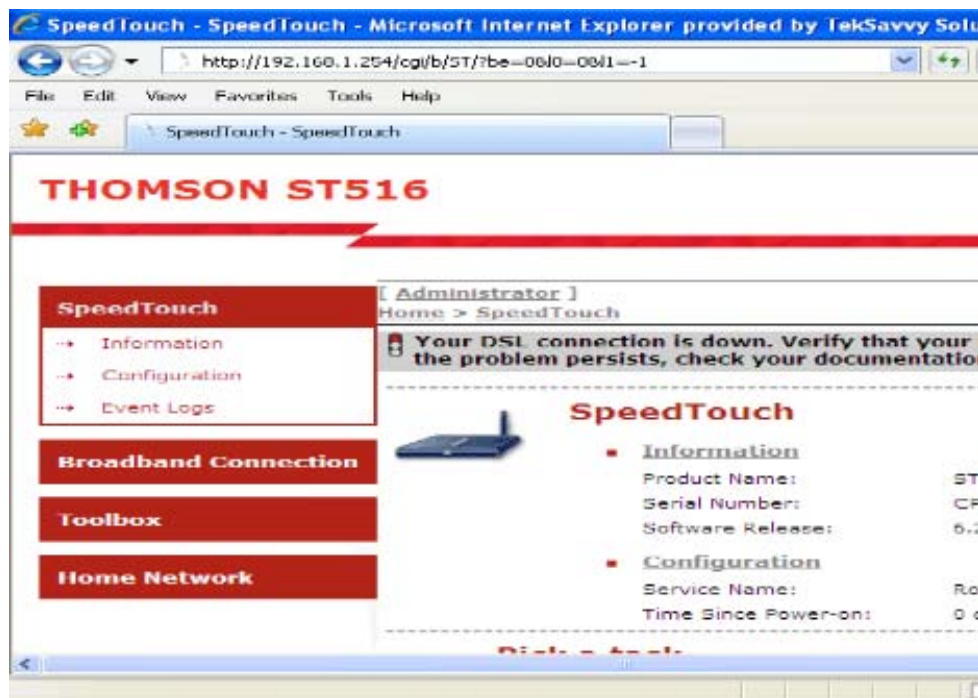


Alcatel Thomson Speedtouch Setup - Routed Mode

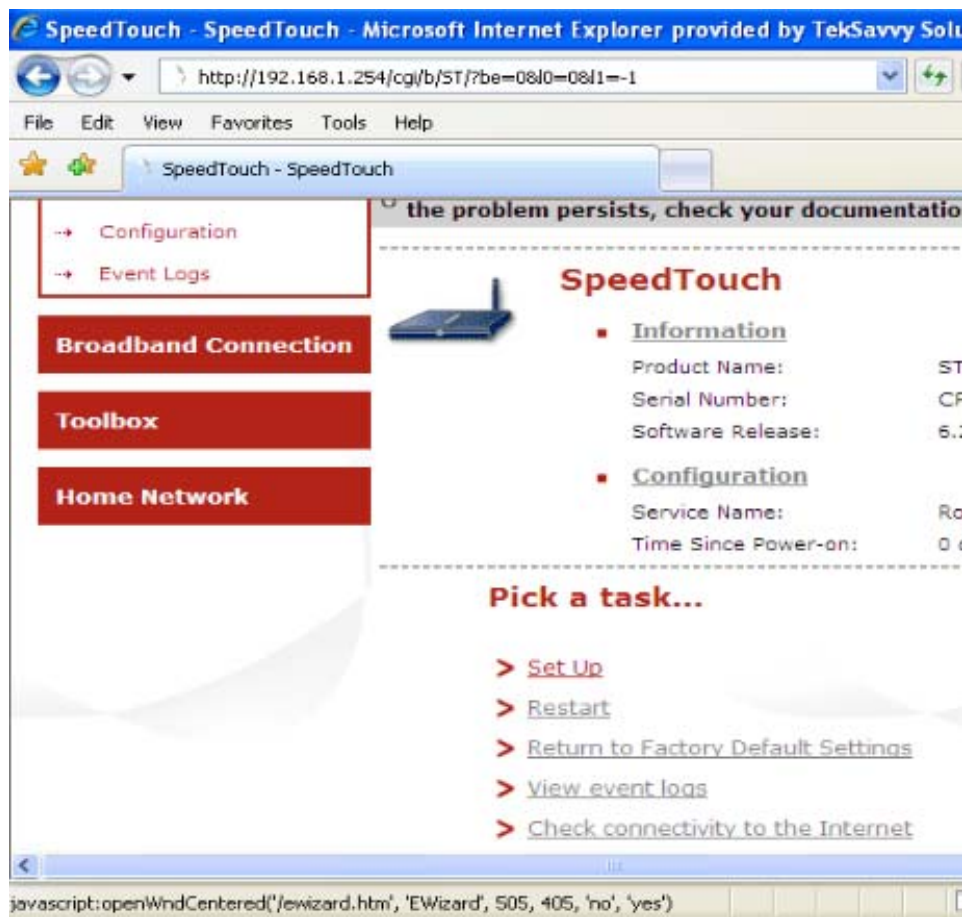
1. Open up your **Web Browser** and type in **192.168.1.254** in the address bar at the top and hit **Enter**. This will open up the Speedtouch home page.



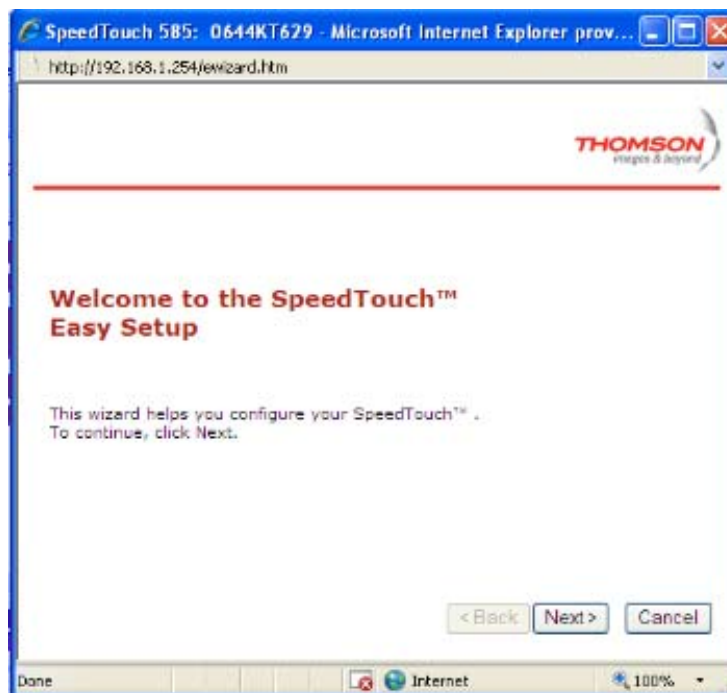
2. Click on the **SpeedTouch** menu on the left



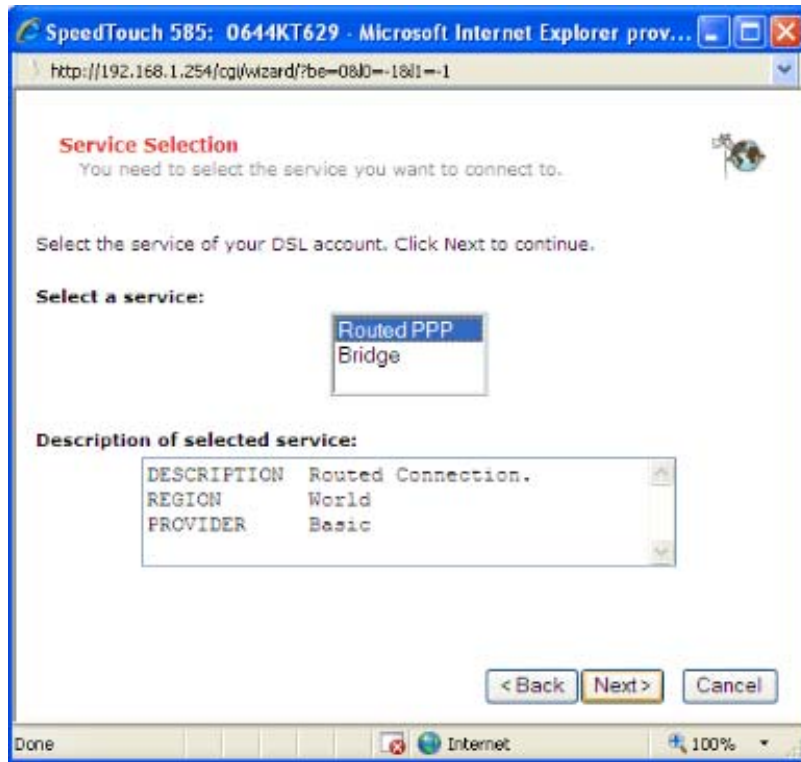
3. **Scroll down** to the bottom of the page and click on the **Set Up** link.



4. A new page will open up. Click **Next**

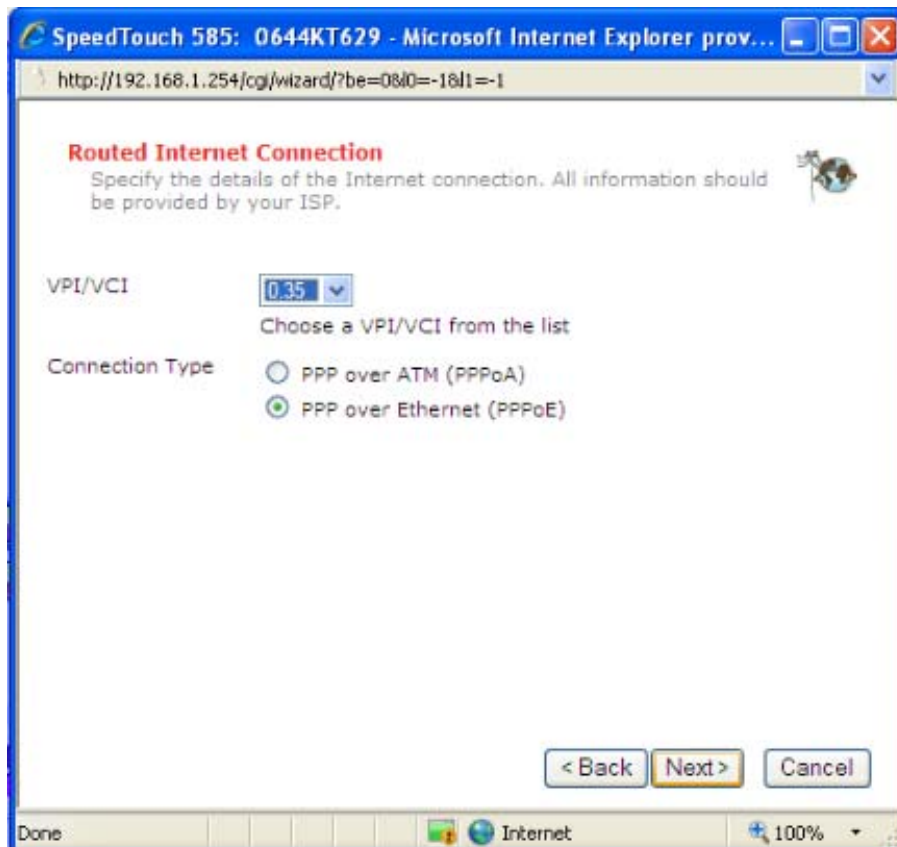


5. Select **Routed PPP** and click **Next**



6. Make sure that the VPI/VCI is **0.35** and Click **Next**.

Note: If your in Alberta or B.C. you need to change this to 0.33



7. Enter in your **User Name**, **Password** and **Confirm Password** and click **Next**

SpeedTouch 585: 0644KT629 - Microsoft Internet Explorer prov...

http://192.168.1.254/cgi/wizard/?be=0&0=-1&1=-1

Internet Account Settings

Specify the details of your Internet Account. All information should be provided by your ISP.

User Name

Enter your Internet connection user name.

Password

Enter your Internet connection password.

Confirm Password

Re-enter your password.

< Back Next > Cancel

Done Internet 100%

8. You can either enter in a password here or leave it blank and click **Next**

SpeedTouch 585: 0644KT629 - Microsoft Internet Explorer prov...

http://192.168.1.254/cgi/wizard/?be=0&0=-1&1=-1

Access Control

Specify user name and password to prevent unwanted access to the SpeedTouch management interface.

User Name

Enter a user name.

Password

Enter a password.

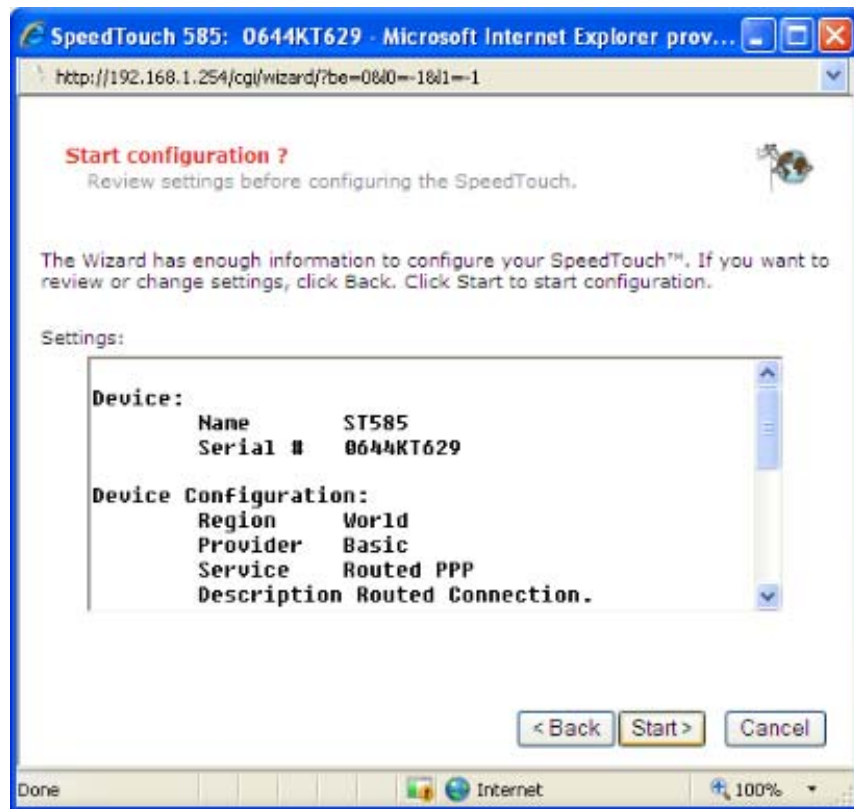
Confirm Password

Re-enter the password.

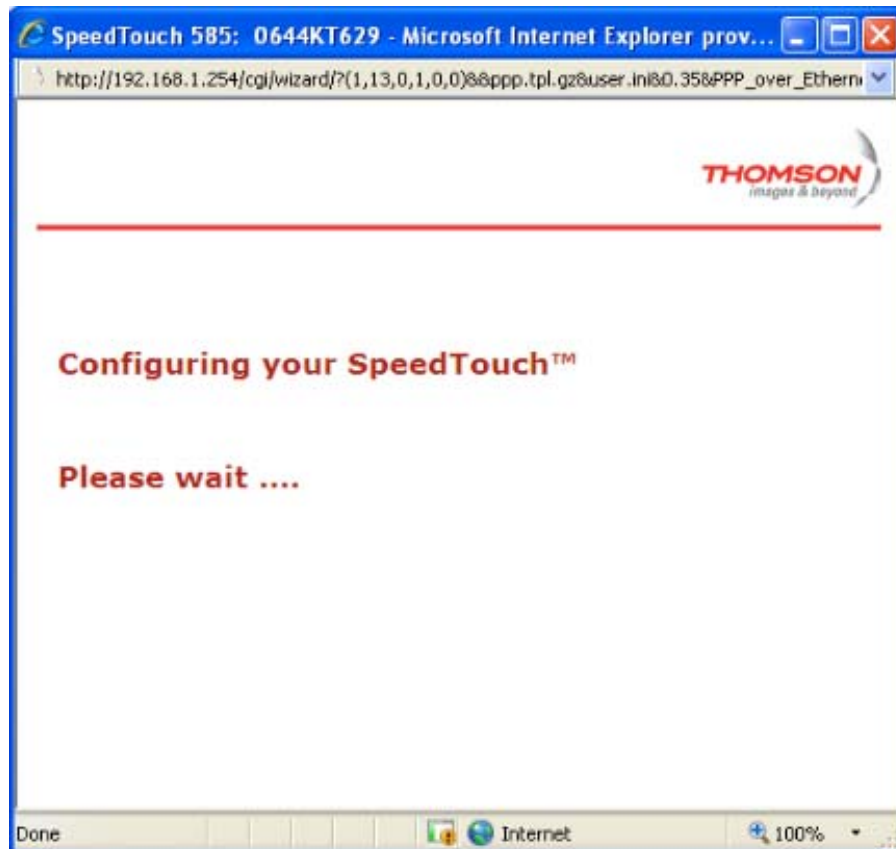
< Back Next > Cancel

Done Internet 100%

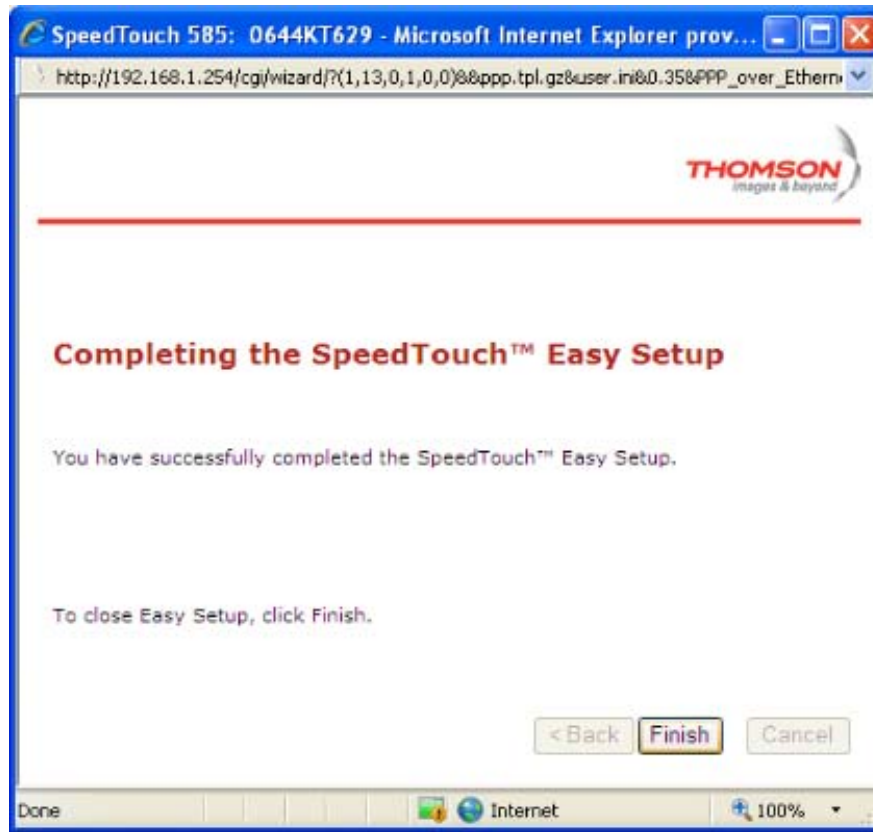
9. Click on **Start**



10. Now we wait...



11. Click on **Finish**



12. We are done! Enjoy high speed.

***** If you have any issues, please call Tech Support team at 1-866-270-7543 *****