

Setting Up Eudora – Montreal-DSL

1. When Eudora First loads, the setup wizard should start, bringing you to this screen. Click on the **Next** button.



2. Choose **Create a brand new E-mail Account"** and click on **Next**



3. Type your full name, then click on **Next**



4. Next Enter your e-mail address, clicking **Next** when finished.



5. In this box, enter your username. Click on **Next**



6. Now enter the incoming server, "mail.pppoe.ca", then click on **Next**



7. Enter the outgoing server, **mail.pppoe.ca** and click on **next**

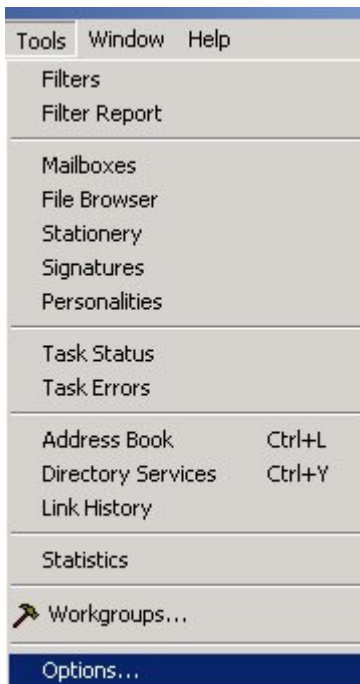


8. Congratulations, click the **Finish** button, and your e-mail is all set-up!



Checking your existing settings

1. First, open your Eurora, then go to **Tools->Options**



2. Click on **Getting Started** on the left, and verify your information on the right.



3. Click on **Checking Mail** to change the receiving mail options.



4. Click on **Internet Dialup** on the left, to change your dial-up connection settings.



Click on OK.

All done! Eudora should be set up for your email.